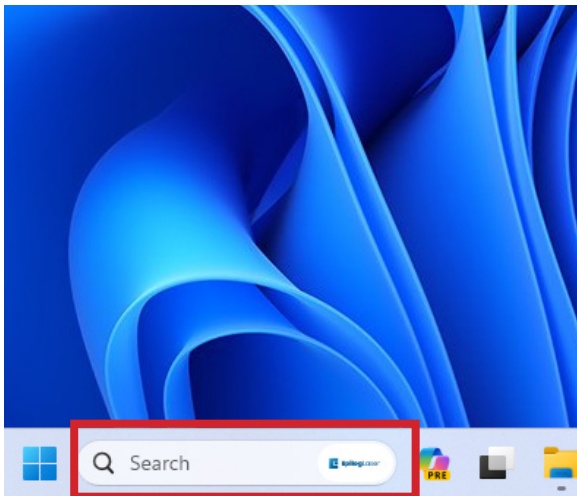


## Windows 11 - Legacy Driver Installation

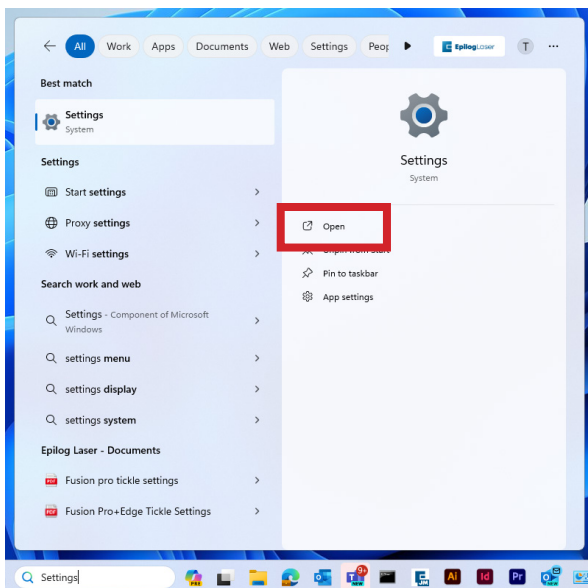
Before beginning, connect the laser to your computer with an Ethernet cable and turn the machine on.

### Ethernet Adapter/Port Setup

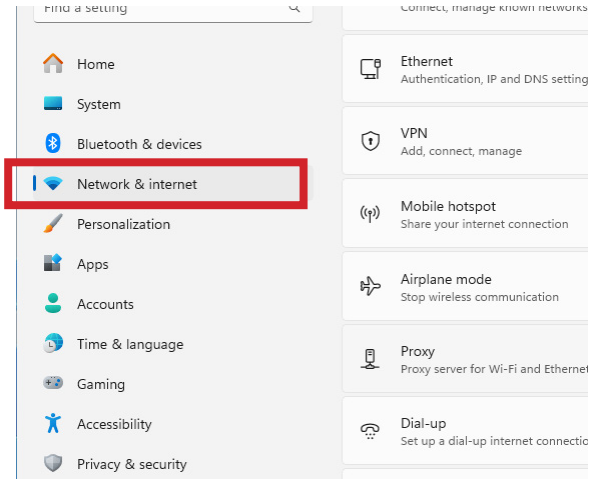
1. In the search bar at the bottom of the screen, type **Settings**.



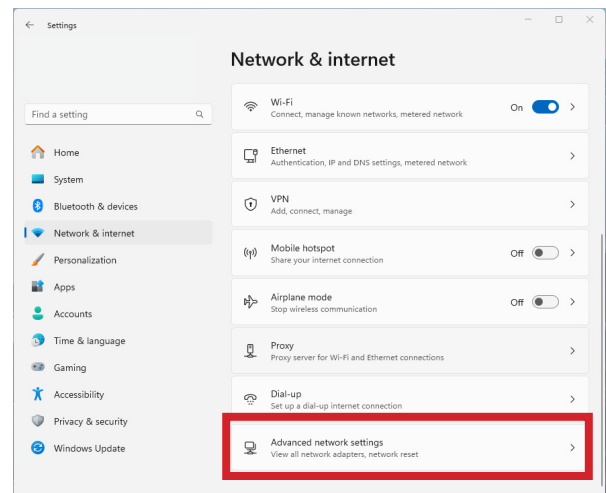
2. Click **Open**.



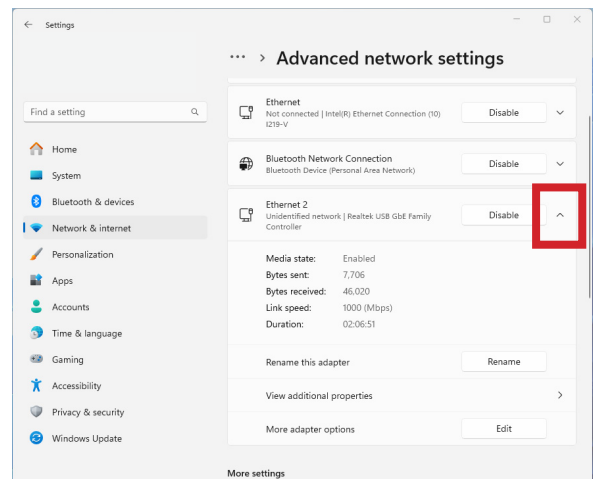
3. Click **Network and Internet**.



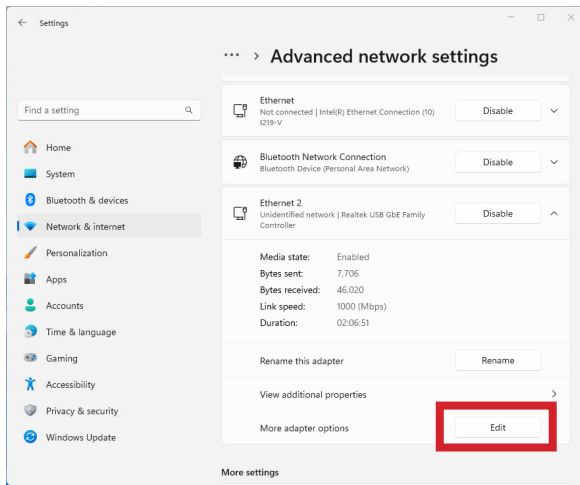
4. Click **Advanced Network Settings**.



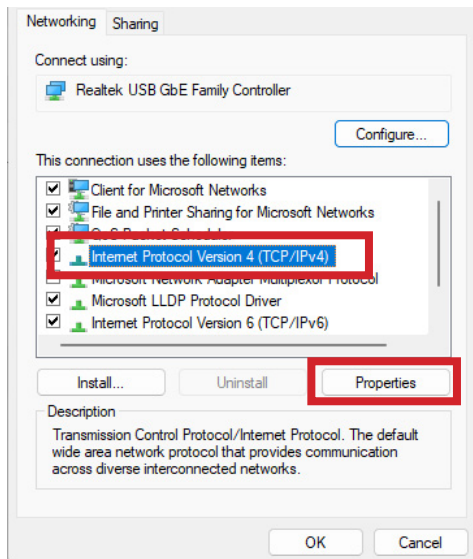
5. Select the drop down arrow next to the lasers Ethernet connection. It will often say unidentified network.



4. Next to **More adapter settings**, click **Edit**.

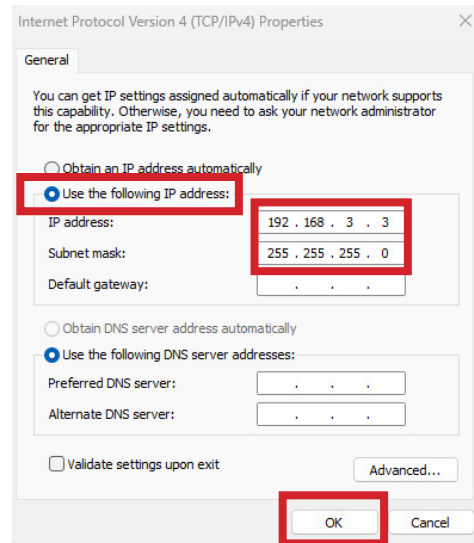


5. Select **Internet Protocol Version 4 (TCP/IP)**, then click **Properties**.



6. Select **Use the Following IP address**. Type **192.168.3.3** into the IP address.

The last digit of this IP address will be different from the IP address of the laser.



6. Click the **Subnet Mask** field. It will auto-populate with **255.255.255.0**.

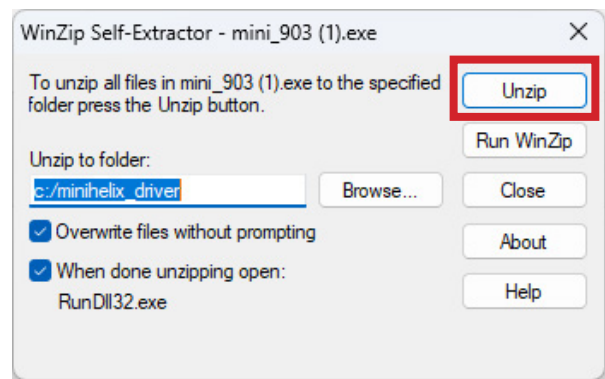
7. Then click **OK**.

## Installing the Driver

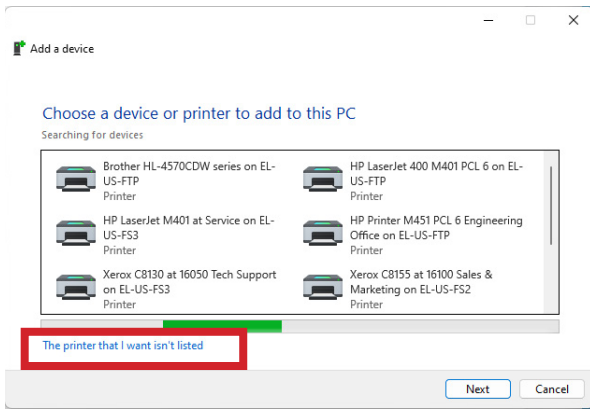
This guide is for Ethernet installation of the Mini/Helix, Zing, EXT, and older Fusion/M2 drivers.

1. Download the Driver from <https://www.epiloglaser.com/tech-support/drivers/>

2. Open the downloaded file and click **unzip**.

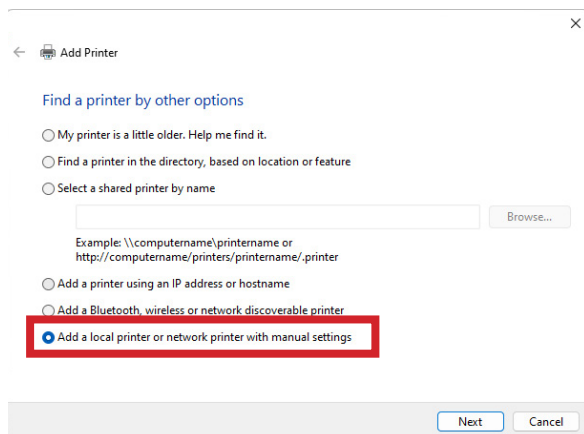


3. The **Add a Device** window will open up. Click **The printer that I want isn't listed**.

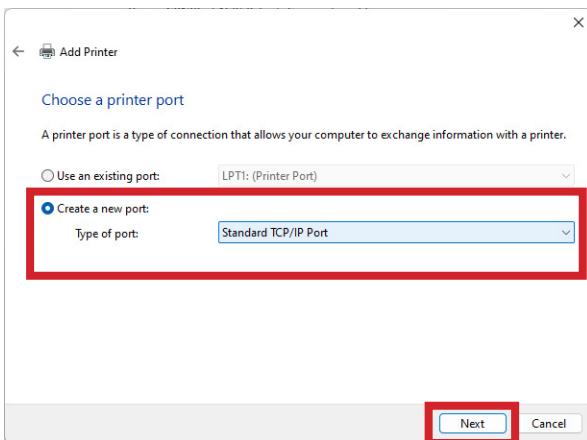


To manually launch, open Settings / Bluetooth and Devices / Printers and Scanners / Add a device / The printer I want isn't listed.

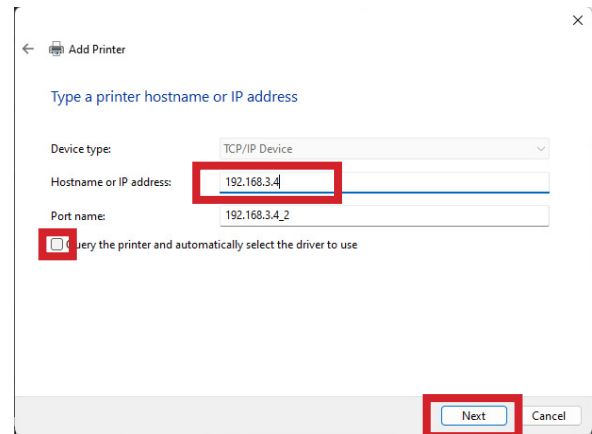
4. Select **Add a local printer or network printer with manual settings**.



5. Select **Create a new port**. From the drop down menu, select **Standard TCP/IP Port**. Click **Next**.

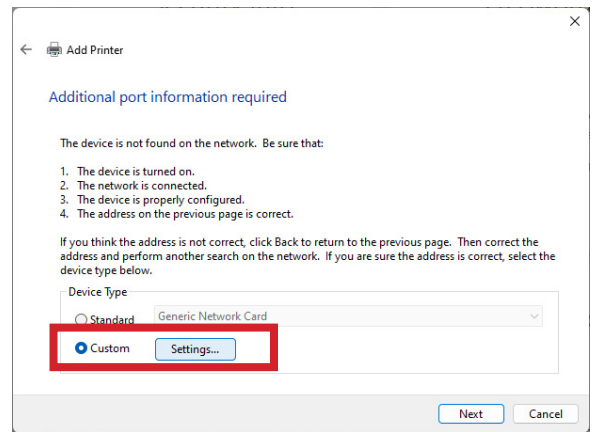


6. Deselect **Query the printer**. Enter the **IP address** of the laser. The default address is 192.168.3.4. Then click **Next**.

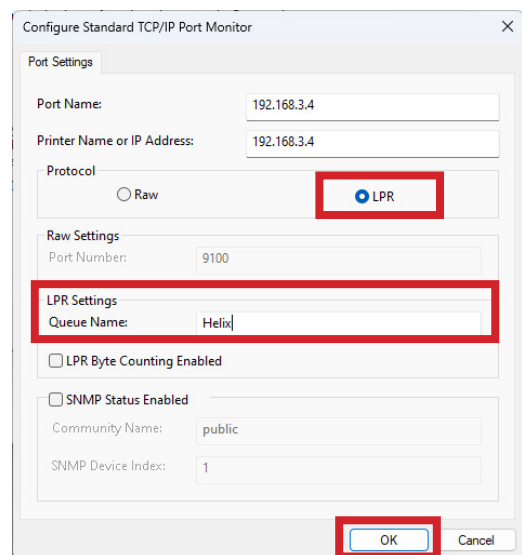


If you don't know the IP address of the laser please refer to the Laser System Manual.

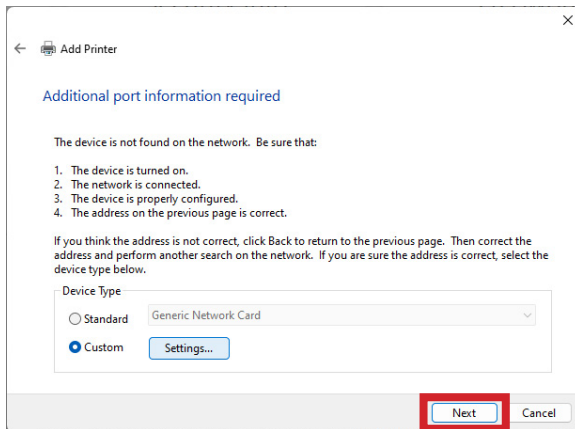
7. Select **Custom** and click **Settings**.



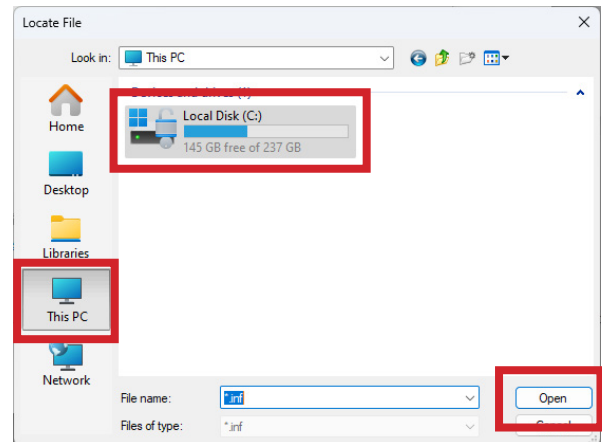
8. Select **LPR** protocol. Enter the machine model in Queue Name. Click **OK**.



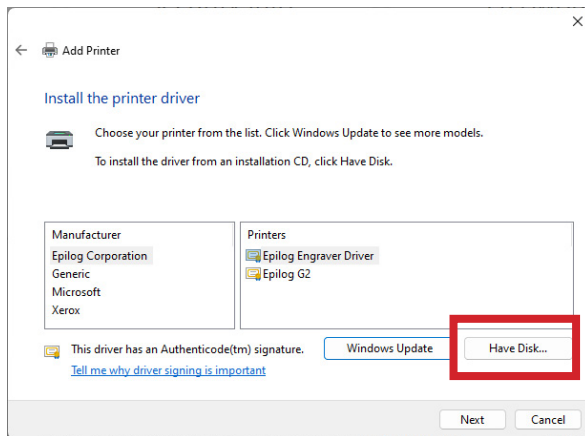
9. Click **Next**.



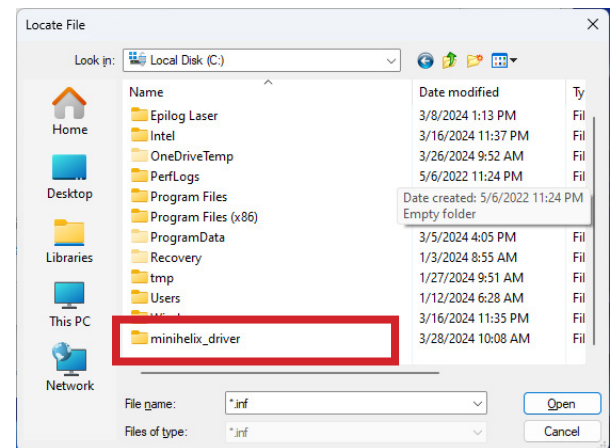
12. Click **This PC**, **Local Disk (C:)**, **Open**.



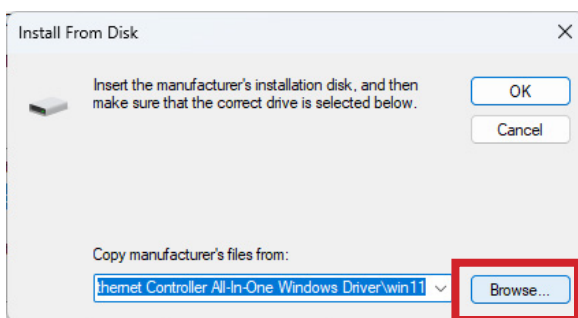
10. Click **Have Disk**.



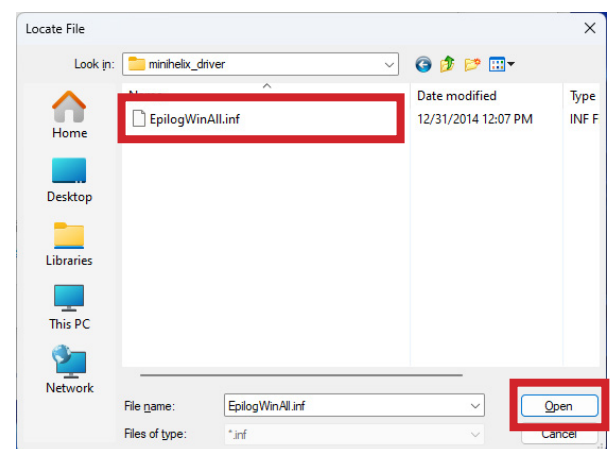
13. Open the driver file for your machine.



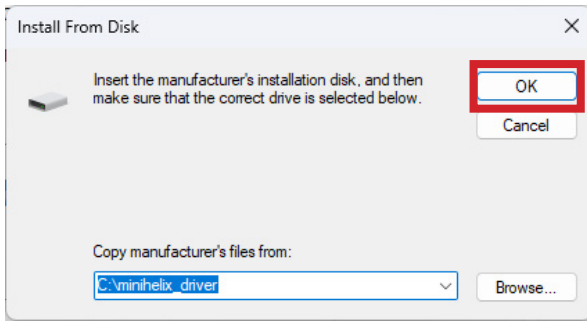
11. Click **Browse**.



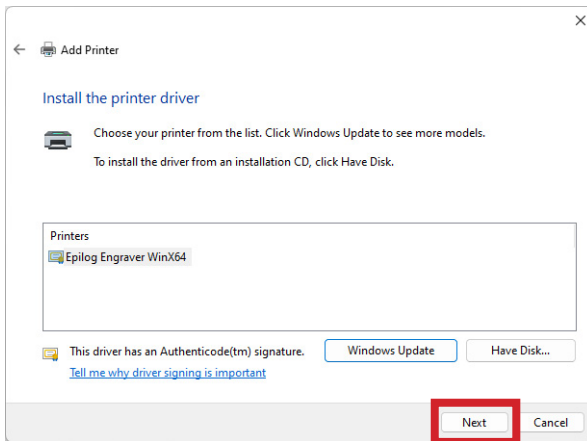
14. Select the **.inf** file and click **Open**.



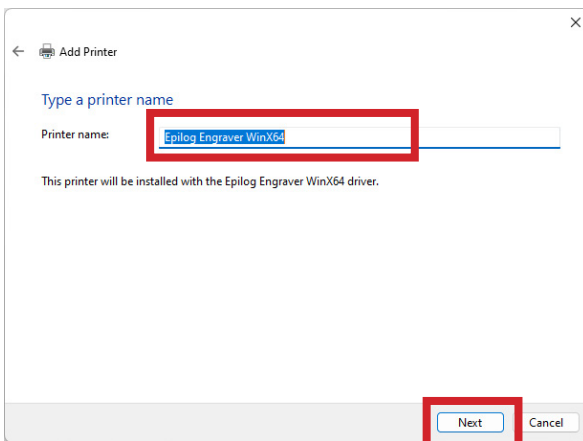
15. Click **OK**.



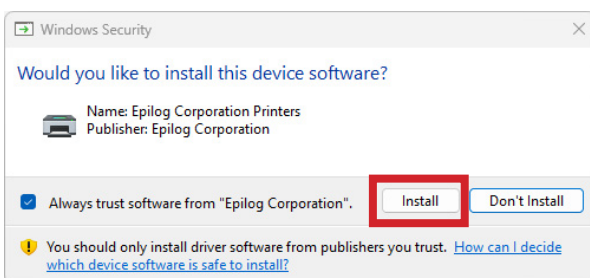
16. Click **Next**.



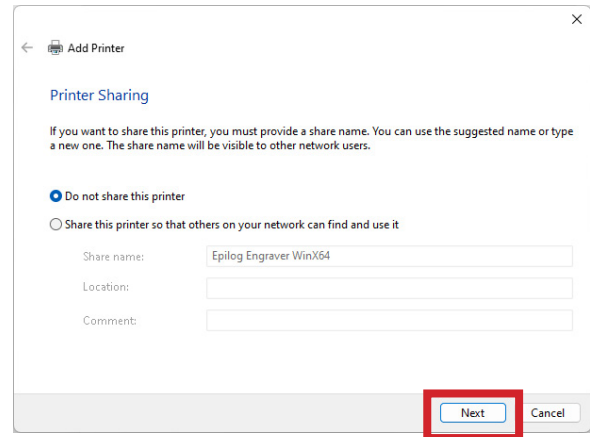
17. Name the printer or leave the default name and click **Next**.



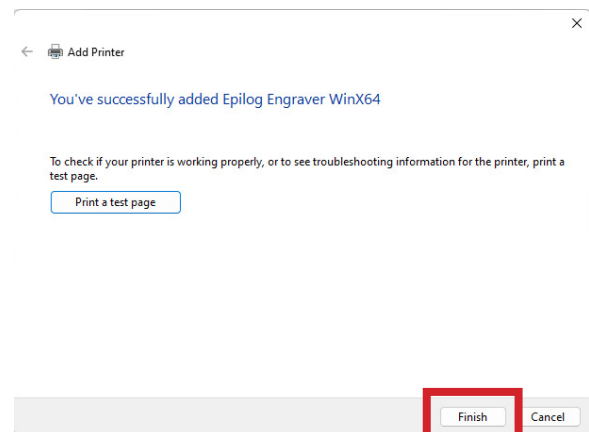
18. Click **Install**.



19. Leave **Do not share this printer** selected and click **Next**.



20. Click **Finish**.



You have now completed the Ethernet installation of your Legacy Driver.

## Unable to send a job to the machine?

- Verify the IP address of the laser matches what was entered during driver install.
- Make sure the USB is NOT connected.
- Test your Ethernet cable.

Further support is available at <https://www.epiloglaser.com/tech-support/technical-support/>